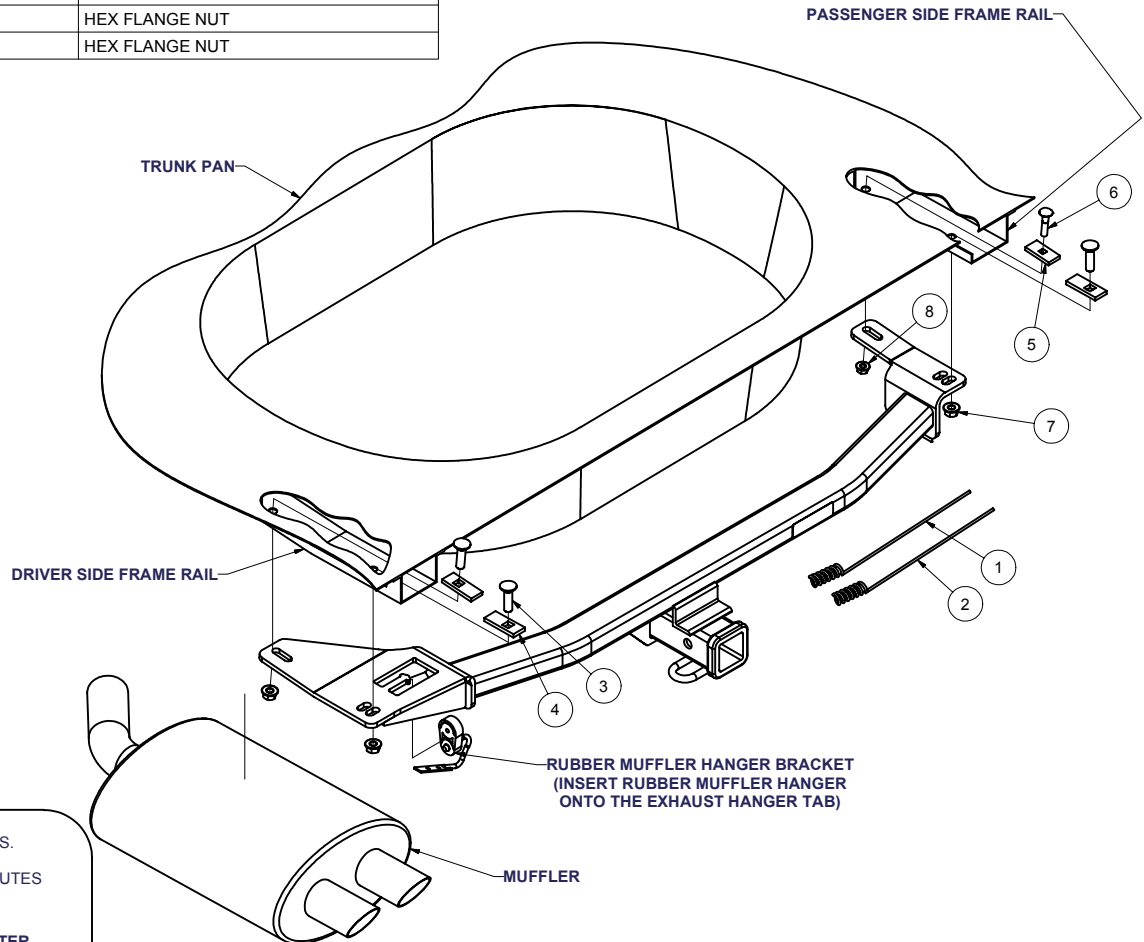


GROSS LOAD CAPACITY WHEN USED AS A WEIGHT CARRYING HITCH: 3,500 LBS. TRAILER WEIGHT & 350 LBS. TONGUE WEIGHT.  
GROSS LOAD CAPACITY WHEN USED AS A WEIGHT DISTRIBUTION HITCH: 4,000 LBS. TRAILER WEIGHT & 400 LBS. TONGUE WEIGHT  
**\*\*\*DO NOT EXCEED VEHICLE MANUFACTURER'S RECOMMENDED TOWING CAPACITY.\*\*\***

Parts List				
ITEM	QTY	PART NUMBER	DESCRIPTION	
1	1	1/2"	FISHWIRE TOOL	
2	1	CM-.375-FW	FISHWIRE TOOL	
3	3	1/2-13 x 1 3/4	CARRIAGE BOLT	
4	3	CM-SP10	.250 x 1.00 x 2.50" SQUARE HOLE SPACER	
5	1	CM-SP18	.250 x 1.00 x 2.00" SQUARE HOLE SPACER	
6	1	3/8 - 16 x 1 3/4	CARRIAGE BOLT	
7	3	HFN 1213	HEX FLANGE NUT	
8	1	HFN3816	HEX FLANGE NUT	



HITCH WEIGHT: 32 LBS.

INSTALL TIME: 40 MINUTES

INSTALL NOTES:

- LOWER VACUUM CANISTER
- LOWER MUFFLER AND RUBBER HANGER

## INSTALLATION STEPS

- 1) Lower vacuum canister and muffler. (discard exhaust bracket)
- 2) Fishwire bolts and square hole spacers into position through access holes on the frame rails. (3/8" fasteners and spacer goes into the forward most hole on the passenger side)
- 4) Raise hitch into position and install remaining fasteners. (For free style use the forward most slot and the rearward most slot on hitch. For Montego and 500 use the opposite rearward hole.)
5. Torque 3/8" fasteners to 30 ft-lb  
1/2" fasteners to 75 ft-lb

**PERIODICALLY CHECK THIS RECEIVER HITCH TO ENSURE THAT ALL FASTENERS ARE TIGHT AND THAT ALL STRUCTURAL COMPONENTS ARE SOUND.**