

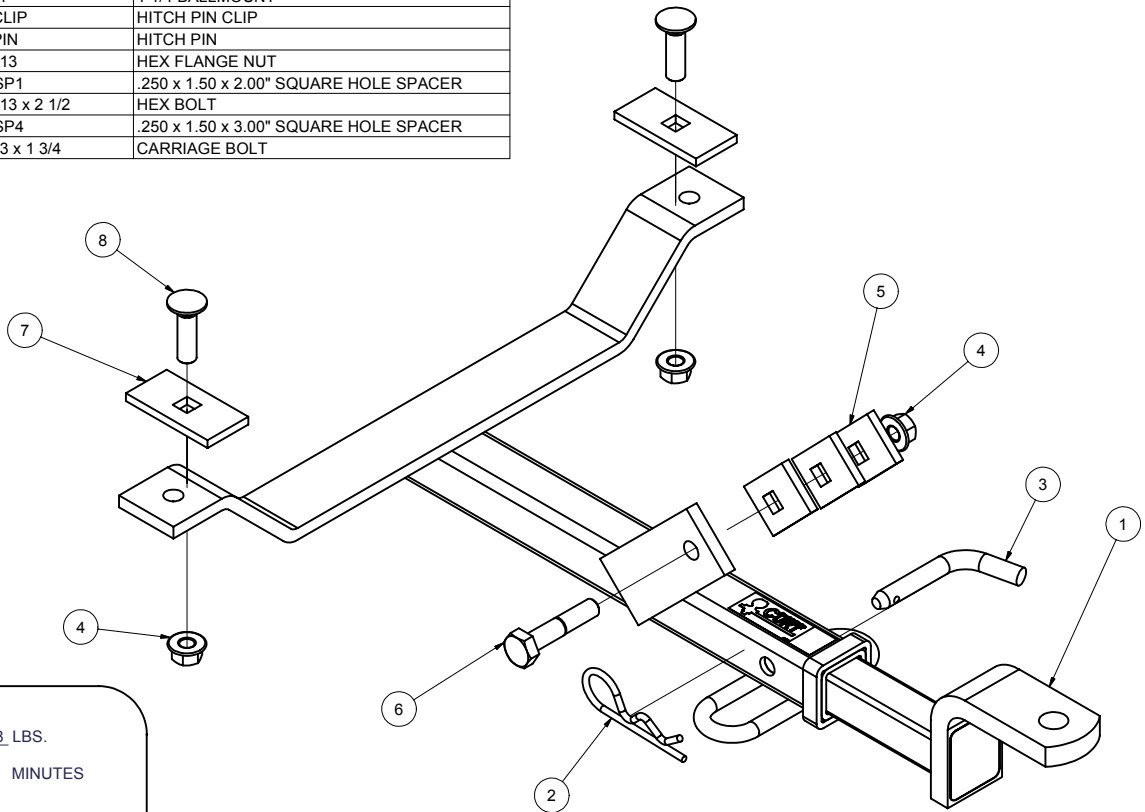


11290

**HONDA ACCORD
ACURA 3.2 TL, 3.2 CL
ACCORD HYBRID**

**GROSS LOAD CAPACITY WHEN USED AS A WEIGHT CARRYING HITCH: 2,000 LBS. TRAILER WEIGHT & 200 LBS. TONGUE WEIGHT
DO NOT EXCEED VEHICLE MANUFACTURER'S RECOMMENDED TOWING CAPACITY.**

Parts List				
ITEM	QTY	PART NUMBER	DESCRIPTION	
1	1	D-224	1 1/4 BALLMOUNT	
2	1	F-4 CLIP	HITCH PIN CLIP	
3	1	F-4 PIN	HITCH PIN	
4	3	1/2 - 13	HEX FLANGE NUT	
5	3	CM-SP1	.250 x 1.50 x 2.00" SQUARE HOLE SPACER	
6	1	1/2 - 13 x 2 1/2	HEX BOLT	
7	2	CM-SP4	.250 x 1.50 x 3.00" SQUARE HOLE SPACER	
8	2	1/2-13 x 1 3/4	CARRIAGE BOLT	



HITCH WEIGHT: 18 LBS.

INSTALL TIME: 35 MINUTES

INSTALL NOTES:

- DRILLING REQUIRED
- UNINSTALL/INSTALL SPARE TIRE

INSTALLATION STEPS

- 1) REMOVE SPARE TIRE FROM TRUNK.
- 2) ATTACH HITCH TO TOW HOOK WITH ATTACHMENT POINT NEAREST END OF RECEIVER TUBE. TWO SPACERS ON DRIVER SIDE OF HOOK, AND ONE ON THE PASSENGER SIDE OF HOOK, BOLTED TOGETHER WITH 1/2" x 2 1/2 LG. BOLT
- 3) USING HITCH AS TEMPLATE, DRILL TWO 1/2" HOLES IN TRUNK PAN.
- 4) INSTALL 1/2-13 BOLTS, BLOCKS, LOCK WASHERS AND NUTS AS SHOWN ABOVE.
- 5) SEAL HOLES DRILLED IN TRUNK PAN TO PREVENT INTRUSION OF EXHAUST FUMES AND WATER.
- 6) REINSTALL SPARE TIRE IN TRUNK.
- 7) TORQUE ALL 1/2" FASTENERS TO 75 LB.-FT.

PERIODICALLY CHECK THIS RECEIVER HITCH TO INSURE THAT ALL FASTENERS ARE TIGHT AND THAT ALL STRUCTURAL COMPONENTS ARE SOUND.

Curt Manufacturing Inc., warrants this product to be free of defects in material or workmanship at the time of retail purchase by the original purchaser. If the product is found to be defective, Curt Manufacturing Inc., may repair or replace the product, at their option, when the product is returned, prepaid, with proof of purchase. Alteration to, misuse of, or improper installation of this product voids the warrant. Curt Manufacturing Inc.'s liability is limited to repair or replacement of products found to be defective, and specifically excludes liability for incidental or consequential loss or damage.